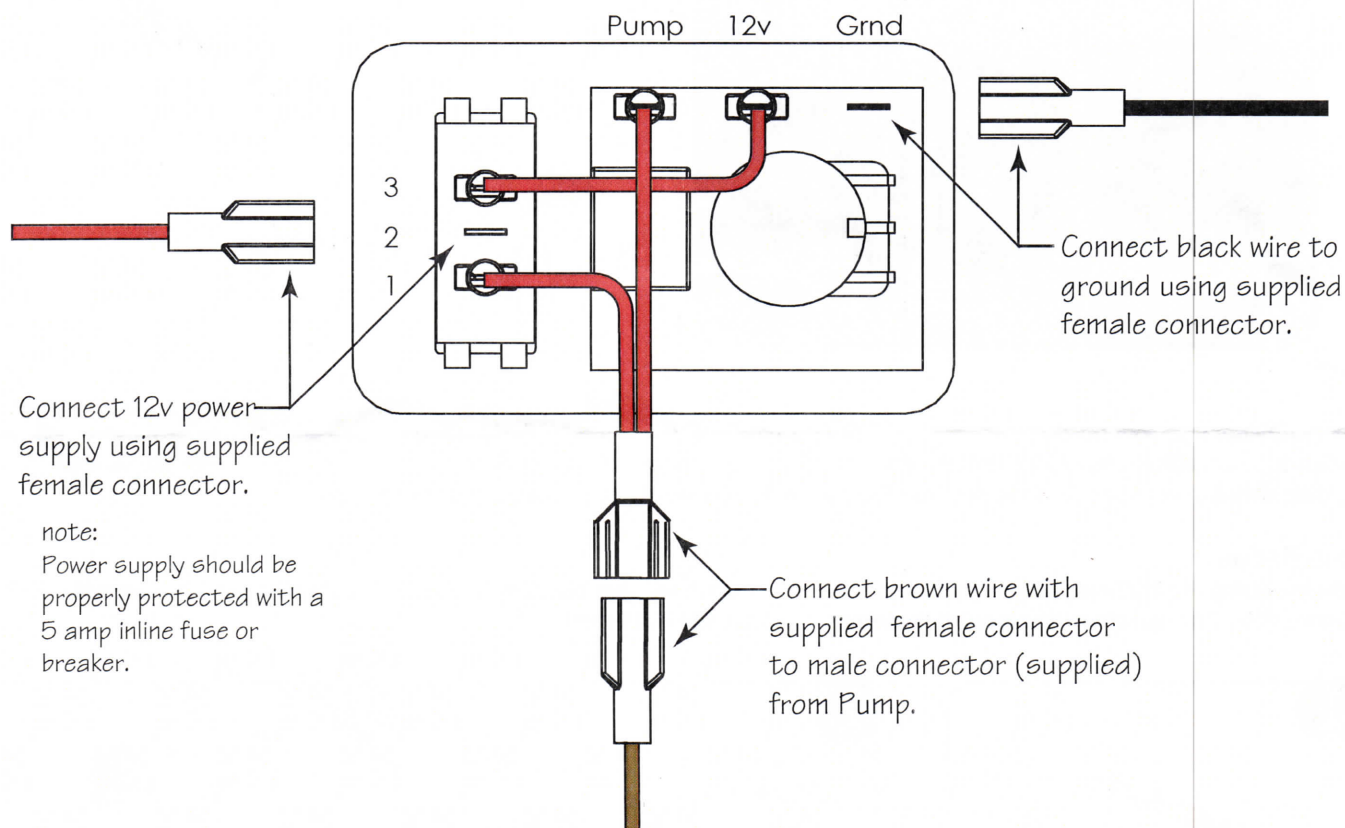




Wiring

All jumper wires and connectors have been included. Follow the diagram below.

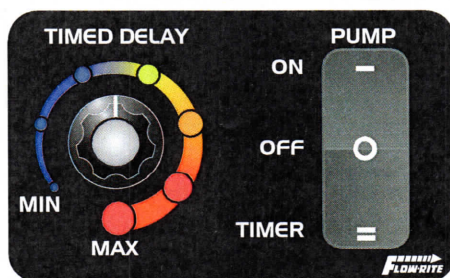


Using the Timed Delay Switch

To use the timed delay switch, place the 3-position master switch in the "TIMER" mode. The MIN and MAX settings refer to the amount of off time between run cycles of approximately 1 minute. MIN will allow the pump to run more often and MAX will allow the pump to run less often. The settings will allow you to set the intervals from approximately 1 to 12 minutes. Avoid using the orange or red areas of the Timed Delay switch unless you are in cold water and have a large livewell with just one or two fish. As you add fish or in warmer water, shorten the time off between cycles by rotating the Timed Delay switch towards the MIN setting. If water temperatures are above 75° F (24° C), Place the master switch in the constant ON position.

ProTimer Dial

Use the ProTimer timed delay feature when the master switch is set to the "TIMER" position. The timed delay mode will allow the pump to run for one minute then off for 1-12 minutes depending on where the dial is set. MIN and MAX refer to the amount of time the pump is off between cycles. MIN will turn the pump off for approximately 1 minute, while MAX will turn the pump off for approximately 12 minutes.



Master Switch

ON - In this position the pump will run constantly, Ideal for water temperatures above 75° F (24° C) "Timed Delay" feature is inoperable.

OFF - Use this to keep the pump off when no water or fish are in livewell.

TIMER - Set the switch in this position to activate and use the "Timed Delay" feature.



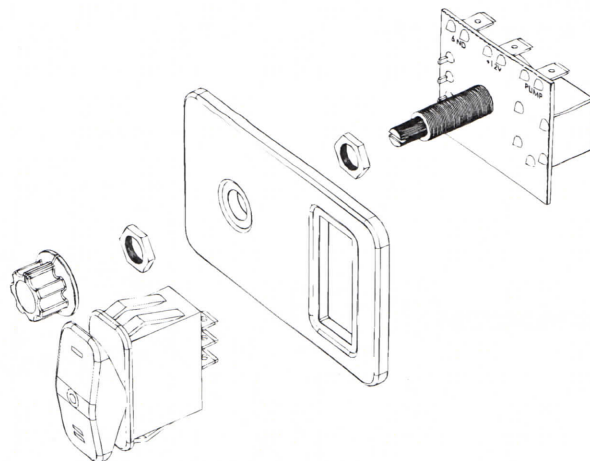
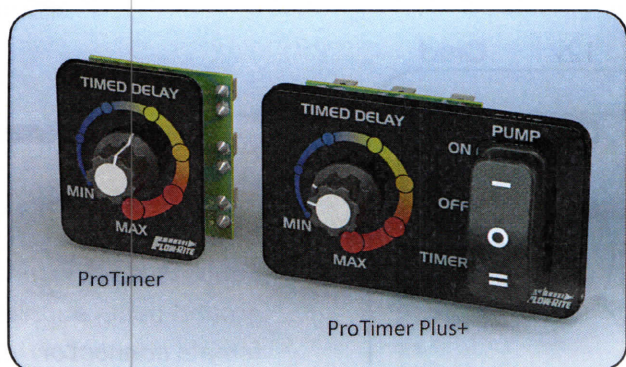
Flow-Rite Controls
USA: 616-583-1700 ~ Australia: +61 (0) 73299 3007 ~ www.flow-rite.com

033111





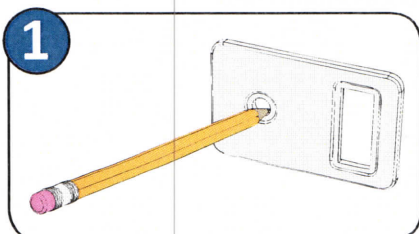
ProTimer™ / ProTimer Plus+™ Installation and Operation Instructions



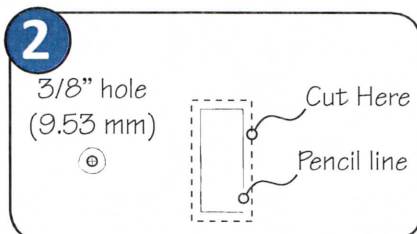
Congratulations on your purchase of the Flow-Rite ProTimer™. The ProTimer is designed to be used with a three position master switch to select either ON, OFF or TIMER mode. The ProTimer is offered in two versions. The base ProTimer is for use with an existing switch in your boat and the ProTimerPlus+ includes this switch as an integral part of the panel.

Installation

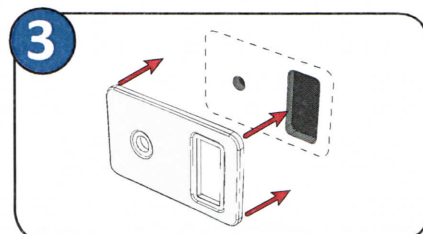
When locating the ProTimer, keep in mind that the ProTimers are weather resistant for the marine environment, but are not submersible. The maximum thickness of the mounting surface 3/4" (19 mm).



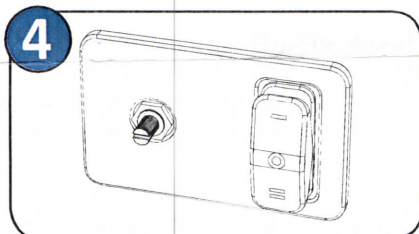
Do not remove the protective covering from the adhesive back at this time. Use the actual panel as a template to locate and mark the rotary timer switch and master switch mounting hole.



Drill a 3/8" (9.53 mm) hole for the timer and, if installing the ProTimer Plus+, cut the switch hole 1/8" (3.18 mm) larger than the scribed line for clearance for the snap in master switch mounting tabs.



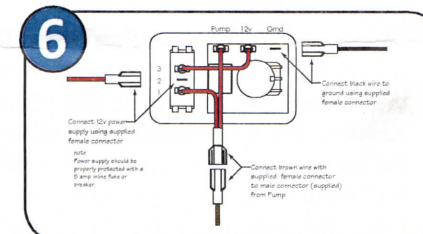
Once the holes are marked, drilled and cut, remove the adhesive backing cover sheet from the ProTimer panel and carefully align and mount the panel in place using firm pressure.



Install the timer switch from the back side and secure with the hex nuts. Snap in the master switch when using the ProTimer Plus+ as shown.



Turn the rotary knob stem all the way to the left (counter-clockwise) until it stops. Place the knob onto the stem with the white indicator pointing to "MIN". Tighten the set screw.



Attach wires as shown in the wiring diagram on the next page.

